

CORDLESS PRUNING SHEAR

KWIK SHEAR

Pruning made easier!



Please read and follow all safety precautions in this manual

INSTRUCTION MANUAL

KWIK SHEAR USER MANUAL CONTENTS

Packing list	3
Kwik Shear overview	4
Description	4
Performance description	4
Technical parameters	4
Battery charging	5
Precautions	5
Blade replacement	5
Use and maintenance of products	6
Start operation	6
Packing operation	6
Fault indication	6
Name and schematic diagram of each part	7
Use and maintenance of Kwik Shear	8
Operation	8
Packing and storage	8
Precautions for use and maintenance of battery	9
Safety precautions	9
Workplace safety instructions	9
Electrical safety instructions	10
Personal safety instructions	10
Abnormal conditions and handling methods	10
Aftersales service	10
Statement	10
Mechanical Diagram	11
Mechanical Information	12
Warranty information and contact details	12

Thanks for choosing Kwik Shear!

Dear users, first of all, thank you for choosing our high quality products!

In order to maximise use of this product, please read the instructions carefully before use. Keep this manual for future reference.

If you have any issues or questions regarding use, please get in touch with us at enquiries@newstyledirect.co.nz. Our customer service assistance are available to answer your questions. Happy pruning!

Packing list

The Kwik Shear kit contains the following:

- | | | |
|-----------------|------------|--------------------|
| 1. Kwik Shear | 3. Charger | 5. Lubricating oil |
| 2. Battery pack | 4. Tools | |



Kwik Shear overview



Explanation

- Please read the manual carefully
- Only charge batteries indoors
- Double insulation without grounding
- Fail-safe transformer
- Power will automatically be cut off when the charging overheats
- Do not dispose the battery or charger with household waste

Performance description

Kwik Shears are battery driven electric pruning shears, which are composed of fixed blade, mobile blade, lithium battery, charger, connecting wire, work package, toolbox, etc. It is mainly used for cutting and pruning of grafting fruit branches under 30mm and pruning and harvesting of a large number of orchards. It is 8-10 times of the traditional manual pruning efficiency, and the pruning quality is obviously higher than that of the traditional manual pruning shears.

Technical parameters

BASIC INFORMATION OF ELECTRIC PRUNING SHEARS	
Working voltage	16.8V 21V
Lithium battery capacity	2AH
Charger input voltage	AC110V~240V
Battery charging time	1 – 2 hours
Battery working time	4 – 5 hours
Rated power	150 watt
Maximum power	600 watt
Total weight	1kg

SHEAR RANGE (MAXIMUM SIZE)	
Diameter	Soft branch 25mm / hard branch 20mm
Working environment temperature	-10°C ~ 60°C

Battery charging

Connect the battery to the charger correctly, and then connect the power plug of the charger to the power socket. At this time, the charger indicator light is red, indicating that the charger is charging, and the charger indicator light is green, and the charging operation is completed.



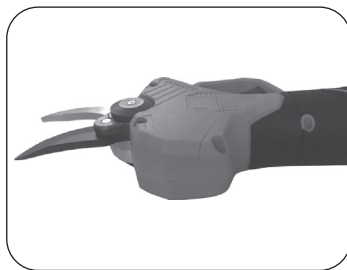
Matters needing attention

- 1 Before charging, please turn the switch to off state. It is normal for charger and battery to overheat slightly during charging
- 2 If the battery is not used for a long time, it must be recharged once every 3 months in order to prolong its service life
- 3 The new battery or the battery that has not been used for a long time needs about 5 charge discharge cycles before reaching the maximum capacity
- 4 Do not recharge the battery repeatedly after only a few minutes of operation, as this may reduce the working time and efficiency of the battery
- 5 Do not use damaged batteries and do not disassemble chargers or batteries
- 6 The battery will explode when put into the fire. Do not barbecue the battery
- 7 Do not charge the battery outdoors or in humid environment
- 8 With the gradual decrease of battery power, the ability of shear diameter will decrease, which is a normal phenomenon
- 9 In the process of charging, the electric pruning shears must be switched off. The electric pruning shears should not be used whilst charging

Blade replacement

When the whole length of the moving blade is no longer in good alignment with the fixed blade or the blade is not cut clean after grinding, it is recommended that you replace the blade. The operation steps are as follows:

- 1 To ensure safety, please switch off the power and remove the battery before replacing the blade
- 2 Follow the following figure to operate step by step to replace the blade
- 3 Clean the blade after replacement, connect the battery, power on and close the blade, and complete



The fixed and moving blades can be replaced separately; when replacing, there is no need to worry about the opening size of the blade, and the normal opening size will be automatically restored after power on.

Use and maintenance

Operation and maintenance precautions of electric pruning shears

- 1 Do not cut branches beyond the scope of work of shears. Do not cut things such as metal, stone and other non plant materials. Do not clamp tools with vice. If the shears are worn or damaged, please replace them
- 2 Keep the equipment clean. Use clean cloth to clean the electric pruning shears, battery and charger (please do not use any corrosive or solvent based cleaner), use a soft brush or dry cloth to clean the dust on the shears head
- 3 Do not immerse electric pruning shears, batteries and chargers in any liquid such as water
- 4 Please use the equipment correctly according to the instructions. Do not use the electric pruning shears, battery and charger when they are damaged
- 5 If the switch cannot be switched on or off normally, do not use the electric pruning shears. The electric pruning shears that cannot be controlled by the switch are dangerous and must be repaired
- 6 Make sure that the switch is closed during any adjustment, replacement of accessories or storage of electric pruning shears. This protective measure will reduce the risk of accidental start-up of electric pruning shears
- 7 Please store the electric pruning shears out of children's reach with the blade closed, and do not let people who are not familiar with the electric pruning shears or do not know the operation instructions to use them. Do not allow untrained users to use the shears
- 8 When using the electric pruning shears and accessories, the use instructions and methods should be followed. At the same time, the working environment and the work to be completed should be considered. Using the electric pruning shears as an operation that does not meet the requirements may lead to injury
- 9 After use, any dirt on the moving and fixed blades should be removed, and lubricating oil should be applied to the contact part to keep the blade in good operational state.
The resistance will be reduced and the life of blade will be enhanced

Please read all safety warnings and instructions carefully

Failure to comply with the relevant warnings and instructions may result in electric shock, fire and severe burns

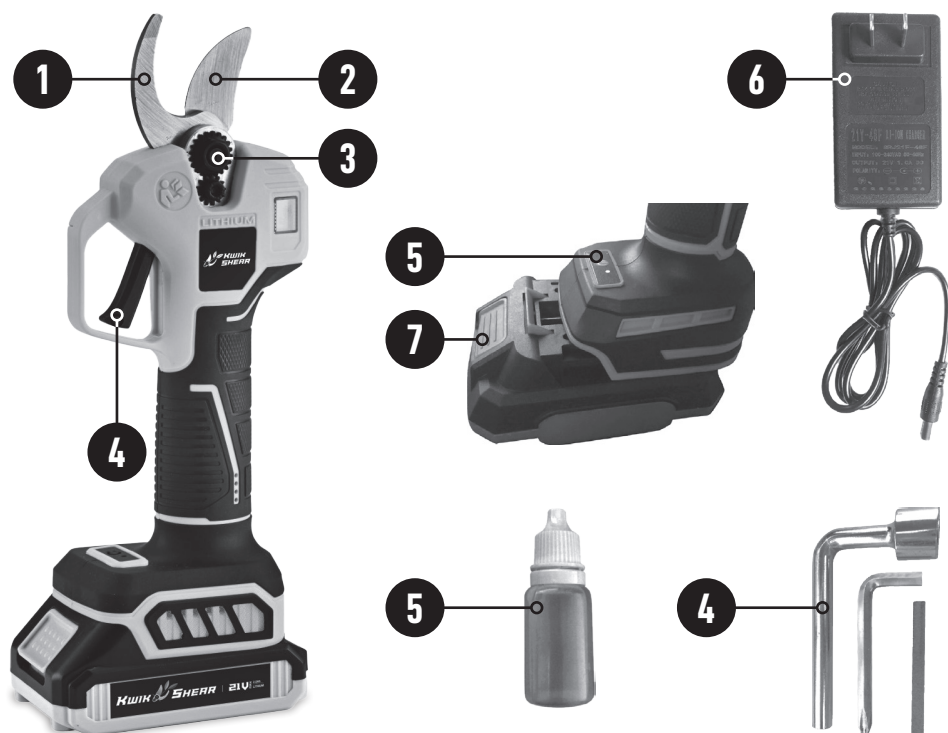
Electric pruning shears should never be used in, or exposed to, rain

When operating the electric pruning shears, do not put your hands near the cutting area to avoid injury

Do not touch the shears with electrified objects to avoid injury

Name and schematic of each part

- | | | | |
|---|-------------------------|---|-----------------------------|
| 1 | Movable blade | 6 | Battery charger |
| 2 | Fixed blade | 7 | Lithium battery pack button |
| 3 | Pin | 8 | Lubricating oil |
| 4 | Machine | 9 | Supporting tool |
| 5 | Power regulating switch | | |

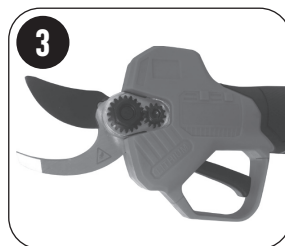
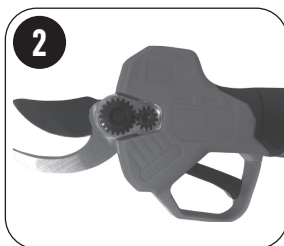


Use and maintenance of Kwik Shear

Operation

- 1 Open the package and insert the battery pack into the battery compartment of the electric shears
- 2 Turn on the power control switch, and the working indicator will turn green
- 3 When powered on for the first time, press the power switch to activate, and pull the trigger twice continuously to enter the working state.
- 4 Normal cutting: press the trigger blade to close and release the trigger blade to open the blade to close: press the trigger continuously for more than 5 seconds, and the blade will close
- 5 Before operating, press the trigger intermittently to close the blade without load for several times to check whether it is normal
- 6 Start working after normal operation.
- 7 After the machine enters the working state, the size of the knife edge can be adjusted according to the diameter of the branches to be cut: it is convenient to work in a narrow space.

The opening of the first gear blade is 15mm, and the size of the second gear blade is 25mm.



Packing and storing

- 1 Press and hold the trigger for more than 5 seconds, release the trigger blade to close it completely
- 2 Turn off the power and take out the battery
- 3 Clean, pack and store in a safe place

Precautions for use and maintenance of battery

- 1 Do not charge under 0 °C or above 45 °C, which may damage the battery and charger
- 2 Before connecting the battery, make sure that the switch is in the off position when the switch is on it is easy to cause accidents when the battery is connected to the electric pruning shears
- 3 Only the charger specified by the manufacturer can be used to charge the battery, which is not compatible with the battery when the charger is used to charge the battery, it may cause fire and other dangerous tests
- 4 When the battery is not in use, keep it away from paper clip, coin, key, nail and screw nails and other small metal objects that can short-circuit the battery. Short circuit of the battery may cause burns or fire
- 5 Do not disassemble or reassemble the battery
- 6 Do not short circuit the battery
- 7 Do not use near heat source
- 8 Do not put the battery into fire or water
- 9 Do not charge near fire or in direct sunlight
- 10 Never insert anything sharp into the battery, impact, throw or hammer the unit.
Never throw the battery
- 11 Do not use batteries that are seriously damaged or deformed
- 12 Direct welding on the battery is prohibited
- 13 It is forbidden to reverse charge, reverse pole connection or excessive discharge of the battery
- 14 Do not connect the battery to the charging socket or the socket of the automobile cigarette lighter
- 15 Do not use on non-specified equipment
- 16 Direct contact with lithium batteries is dangerous and should be avoided
- 17 Never place the battery in high temperature and high pressure container such as microwave oven
- 18 Do not use leaky batteries
- 19 Keep batteries away from children's reach
- 20 Avoid using or placing the battery on the vehicle in the sun (or direct sunlight), this may cause battery overheating and fire, resulting in functional failure and shortened service life
- 21 It is forbidden to use batteries in places with static electricity (more than 64V)
- 22 When the battery is used for the first time, if there is corrosion, bad smell or abnormal phenomenon, avoid using the unit and return to point of sale
- 23 If the skin or clothes are stained with the electric liquid on the battery, immediately rinse with water
- 24 If the electric pruning shears are not used for a long time, the battery should be fully charged for storage

Safety precautions

Warning! Please read all instructions carefully. Failure to follow all instructions below may result in electric shock, fire or other serious injury.

Workplace safety instructions

1. Always use in a clean and well-lit work area to avoid accidents
- 2 Do not operate electric pruning shears in explosive, flammable and humid environments
3. Operate electric pruning shears away from other people to avoid distraction possible accidental injury. Always keep charged while stored.

Electrical safety instructions

1. The battery socket of the electric pruning shears must match the battery connection plug. Do not modify the socket and plug in any way.
2. Do not expose the electric pruning shears to rain or humid environment. Water or other liquids will increase the risk of electric shock and cause electrical damage.
3. Do not abuse the electric wires. Do not use the power cord to lift the belt, pull the electric pruning shears or pull out the plug. Keep the electric pruning shears away from heat, oil, sharp edges or moving parts. Do not use the charger when the power cord or plug is damaged. The damaged or entangled wires will increase the risk of electric shock.

Personal safety instructions

1. Keep alert, pay attention to the operation and keep awake when operating the electric pruning shears. Do not operate the electric pruning shears under the condition of fatigue, drug treatment or alcohol reaction. The energy dispersion may cause serious personal injury during the operation.
2. Use safety protection device, always wear goggles, etc. under appropriate conditions, such as dust mask, anti-skid safety shoes, safety helmet, hearing protection device, etc., can reduce personal injury.
3. Before the electric pruning shears are connected, remove all adjusting keys or spanners. The spanners or keys left on the rotating parts of the electric pruning shears will cause personal injury.
4. Do not extend your hands too long and keep your hands away from the cutting area. Do not stretch your hands under the materials for any reason. At the same time, make sure that any material or surface under the cutting area will not be damaged by the cutting edge. Pay attention to the balance between the feet and the body at all times, which can control the electric pruning shears in case of accidents
5. Dress properly. Do not wear loose clothes or accessories. Keep your hair, clothes and sleeves away from moving parts. Loose clothes, accessories or long hair may get involved in moving parts.

Abnormal conditions and handling methods

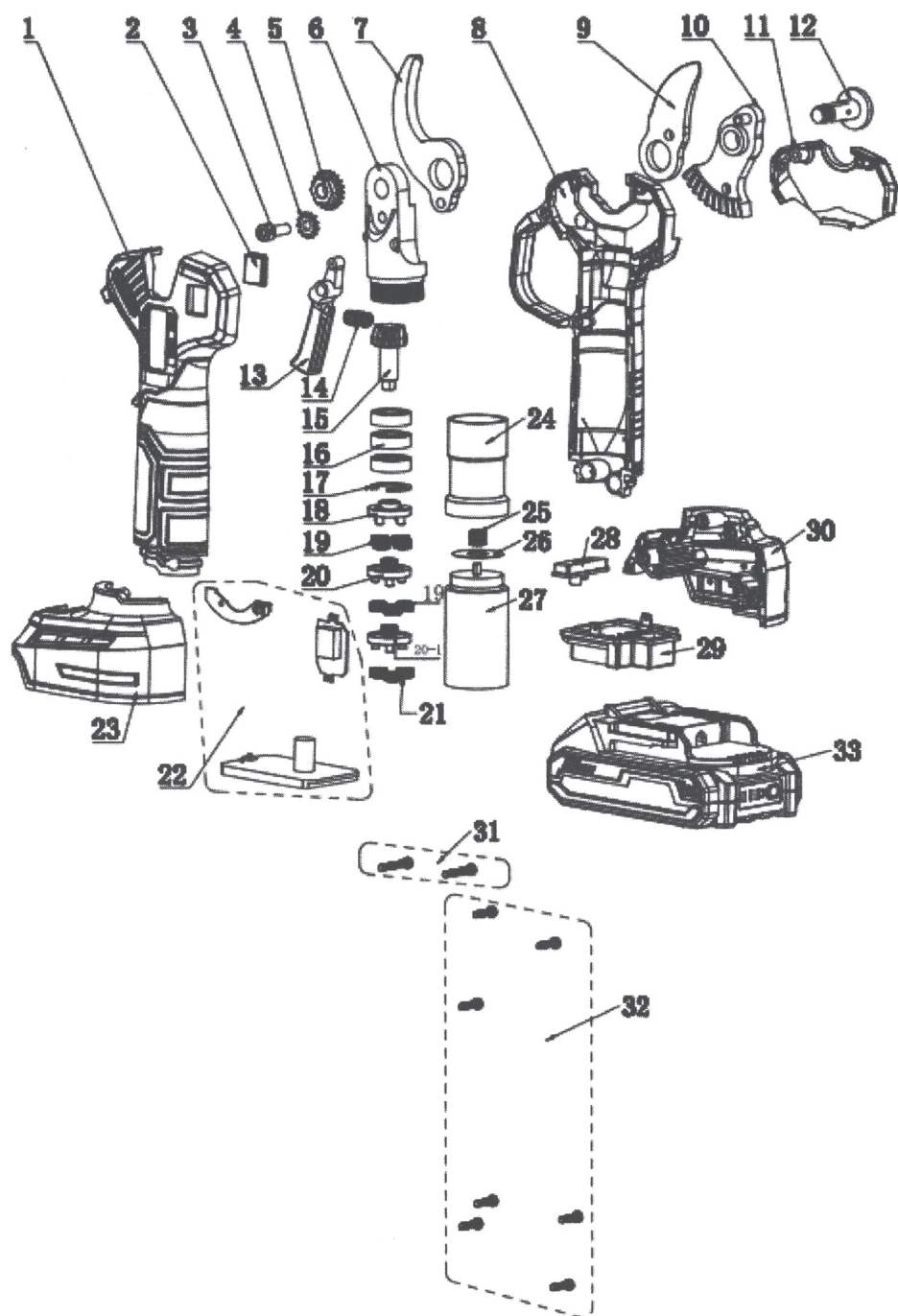
1. When the non shearable material is put into the incision, release the trigger immediately and the blade will return to open state automatically
2. When the cutting branch is too hard, release the trigger in time, and the motorized blade will return to the open state automatically
3. If the battery cannot be charged normally, first check whether the battery charger is attached to the product, and then pay attention that the charging voltage must be consistent with the voltage on the nameplate
4. In case of electrical or mechanical fault, please turn off the switch immediately
5. If the liquid is not used according to the operating instructions, the battery may eject liquid. Do not touch the liquid. If the liquid is splashed into the eyes, you should clean it with water immediately. In addition to washing with water, you must go to the hospital for treatment. The liquid ejected from the battery may cause irritation or burns

After-sale service

If you have any questions during the use, please contact us in time (see the next page for contact information). We have professional personnel to answer questions and problems for you, and let qualified maintenance personnel use the same replacement parts to repair the electric pruning shears, so as to maintain the safety performance of the electric pruning shear.

Statement

The company reserves the right to make technical improvement to the products described in this manual. If there is any change, please understand. If there is any discrepancy between the graphic image and the text description in this manual, please refer to the real object.



SERIAL NO	NAME	QTY
1	Chassis left	1
2	Display screen cover	1
3	M5*14 hexagon socket head screw	1
4	Stop-back piece	1
5	Hexagon nut with teeth	1
6	Aluminum bracket	1
7	Fixed blade	1
8	Chassis right	1
9	Moving blade	1
10	Swing teeth	1
11	Side cover of casing	1
12	Knife edge axis	1
13	Trigger	1
14	Trigger spring	1
15	Small cone tooth	1
16	699 bearing	3
17	Hole elastic retaining ring 19	1

SERIAL NO	NAME	QTY
18	Square constellation F4 hole	1
19	Small planet wheel	7
20	Sun gear component f	1
20-1	Sun gear component F 95-2	1
21	The planet is big	3
22	Hall control panel	1
23	Chassis base left	1
24	Gear case	1
25	Motor tooth	1
26	Flat gasket	1
27	Electrical machinery	1
28	Switch plate	1
29	Makita push pin	1
30	Chassis base right	1
31	ST3*20 Phillips screw	2
32	ST3*12 Phillips screw	7
33	Kwik Shear battery pack	1

KWIK SHEAR WARRANTY

The KWIK SHEAR tool, battery and charger are covered by a 2 year warranty. This warranty does not include wear and tear on consumable parts. Proof of purchase is required.

WARRANTY PROCESS

Kwik Shear New Zealand warrants each new Kwik Shear to the original purchaser thereof, to be used and maintained properly. This shall be in lieu of any other warranty, expressed or implied, including, but not limited to, any implied warranty of merchantability or fitness for a particular purpose.

Kwik Shear New Zealand shall repair or replace, at its option and without cost to the original purchaser, any Kwik Shear or warranted part that has been found to be defective and is within the period of the warranty. All freight to and from Kwik Shear New Zealand is to be paid for by the customer.

The liability of Kwik Shear New Zealand under this warranty shall be limited solely to repair or replacement of the Kwik Shear body and warranted parts within the warranty period; and Kwik Shear New Zealand shall not be liable, under any circumstances, for consequential or incidental damages, including, but not limited to, personal injury or labor costs. This warranty gives the original purchaser specific legal rights and you may also have other rights which vary from state to state. Under no circumstances will Kwik Shear New Zealand be responsible for any expense in connection with any repairs made by anyone other than the Kwik Shear New Zealand or authorised repairers, unless repairs have been specifically authorised in writing by Kwik Shear New Zealand.

If you have any questions about your warranty registration, you can contact us at:

Kwik Shear New Zealand • Email: enquiries@newstyledirect.co.nz • Ph: +64 09 478 2717



www.kwikshear.co.nz

